

Chesapeake

Collection



Metal Shelves



Fireplace Doors



Potomac door shown w/ Mission Pane decorative design



Estate Series

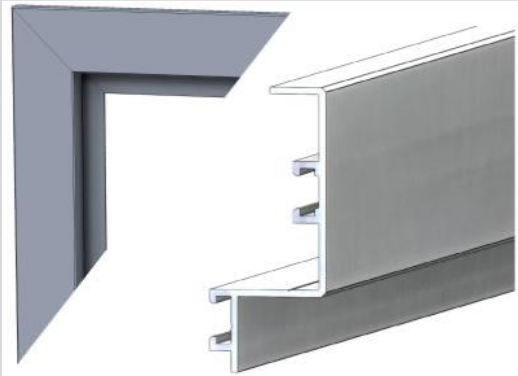
Features included fully custom extruded aluminum-thicker than most competitors-door & main frame, dual corner-key construction, all-in-one mounting system, positive-catch door latches, slimline hinges that allow doors to open 180 degrees, 9 handle designs, & 13 finishes to help customize your fireplace door.

The Estate Series has three unique frame options – Cambridge, Williamsburg, and Easton styles.

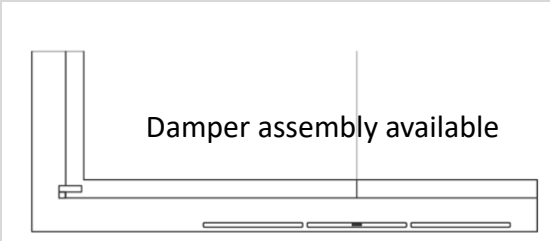
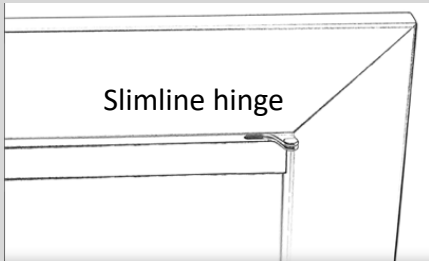
Cambridge



Frame width: 2 5/8" Frame Depth 3/4"
Masonry Overlap: 2 1/4" max per side
ZC Overlap: 1/2" per side

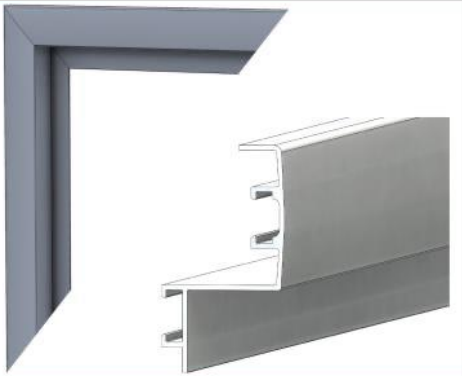


Hinges and dampers available on Estate Series doors

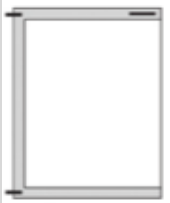


Williamsburg

Frame width: 1 3/4" Frame Depth 9/16"
Masonry Overlap: 1 1/4" max per side
ZC Overlap: 1/2" per side



Door type – available on all styles

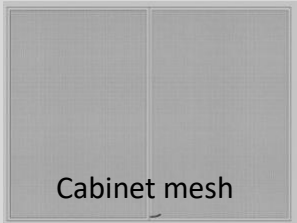


Cabinet door

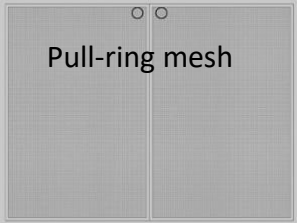


Bifold door

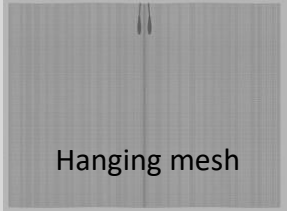
Screen type available on all Chesapeake collection fireplace doors



Cabinet mesh



Pull-ring mesh



Hanging mesh

Easton

Estate Series cont.

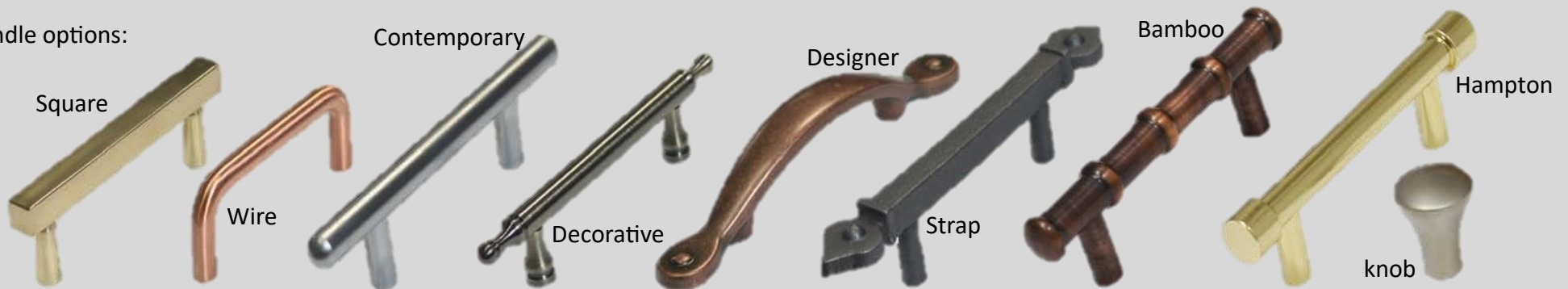


Frame width: 1" Frame Depth 3/8"
Masonry Overlap: 3/4" max per side
ZC Overlap: 1/2" per side



Handle Styles available for all Estate Series doors

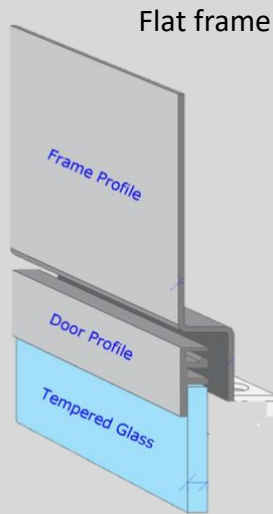
Handle options:



Black Water

Estate Series cont.

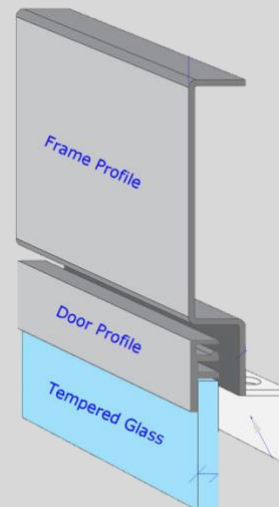
14 ga Steel & Aluminum construction. Available in both formed frame and flat frame profile. Standard or custom sizes to fit most fireplace needs. Bifold or Cabinet doors. Main frame 2 7/8" Max overlap 2 5/8" per side. Mesh kit available & adds 5/8" mounting depth. Glass color - Grey



Main frame Depth flat frame: 1/8"
Recessed mounting depth flat frame: 3/4"



Formed frame



Main frame Depth formed frame: 3/4"
Recessed mounting depth flat frame: none



Manor Series

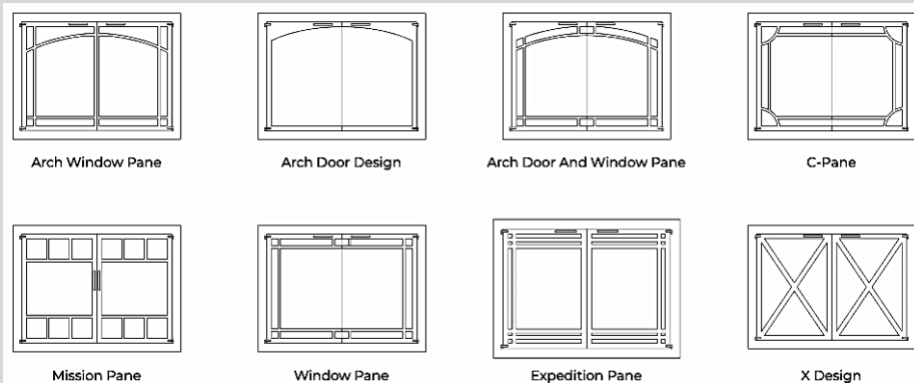
Potomac



Welded bullet hinge
 Also shown with optional Arch door & windowpane design.
 7-gauge all steel construction, laser cut frame, Arch door design, multiple Stock sizes to fit most fireplaces.

Frame width: 2 1/2"
 Frame Depth: 3/16" returns can be added
 Overlap: See sizing chart
 will work with openings 30 1/2" to 50 1/2" W x 22 1/4" to 34 1/4" H

Decorative design options:

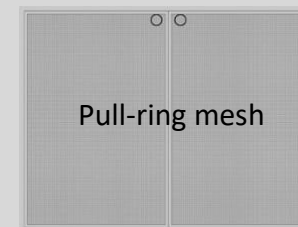


Handle options

Screen type available



Cabinet mesh



Pull-ring mesh



Hanging mesh

Chesapeake Shelves

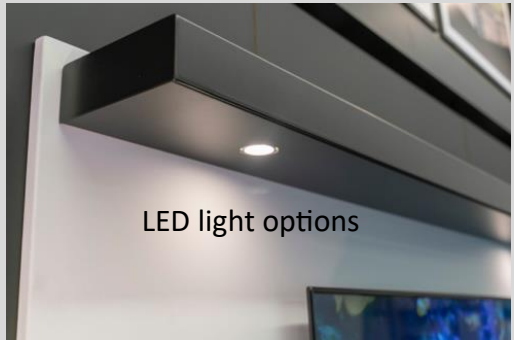
Fully customizable floating metal shelves. Non-combustible all metal and combustible wood inserts available. Hang over fireplaces, in kitchens, coffee bars, entertainment areas and outdoor living spaces.



Banding options for any size mantel shelf



Three wood inserts with or without banding & rivets



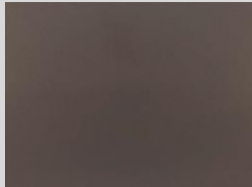
Chesapeake finish options

Blacksmith
Standard Powder Coat:

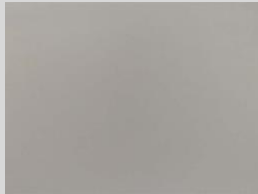
Aspire Rust



Bronzed Iron



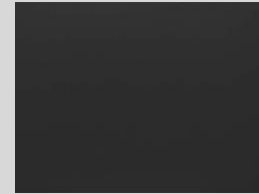
Champagne



Charcoal



Matte Black



Oil Rubbed Bronze



Silver Mist



Textured Black



Premium Powder Coat:

Antique Bronze



Antique Grey



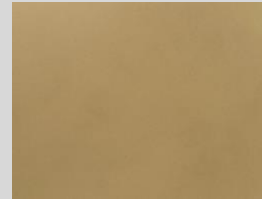
Blushed Black



Brushed White



Satin Gold



Rev 042324 es

Shelve inserts:

Salon



Engadina



Espresso



Your local dealer: